



Easystore Depot

THINK DEPOT

 **WINTERSTEIGER**
Thinking about tomorrow.



Easystore

Tailor-made storage solutions

Easystore locker systems by WINTERSTEIGER make an impression with state-of-the-art design, maximum flexibility and stability, and maximum storage capacity on a minimal footprint. Customized features allow you to choose your own colors, logos, visuals and labeling to customize the locker design. We plan storage lockers individually based on your requirements, taking maximum space utilization, drying, and disinfection into account, while at the same time catering to your system needs.

Our Easyrent rental, storage and POS software makes storage management unbelievably fast and easy. It also features a simple module for managing and lock control for the Easystore locker systems.

Benefit from our experience. WINTERSTEIGER supports you from the planning phase all the way to implementation of your perfect storage facility.

Contents:

From planning to implementation	4
Drying variations	6
Ski and boot storage lockers	8
Locking systems	18
Benches	20
Colors and decor	22

From planning to implementation

Benefit from our experience

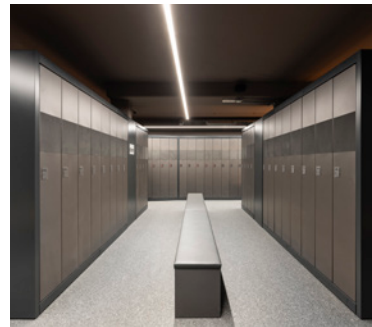
Let WINTERSTEIGER help you plan your ski rental or storage facility. In cooperation with our partner Steurer Systems, we can provide you with expert advice to assist you in the design and layout of your location. Thanks to many years of combined experience, we can guarantee an efficient, profitable solution to your business.



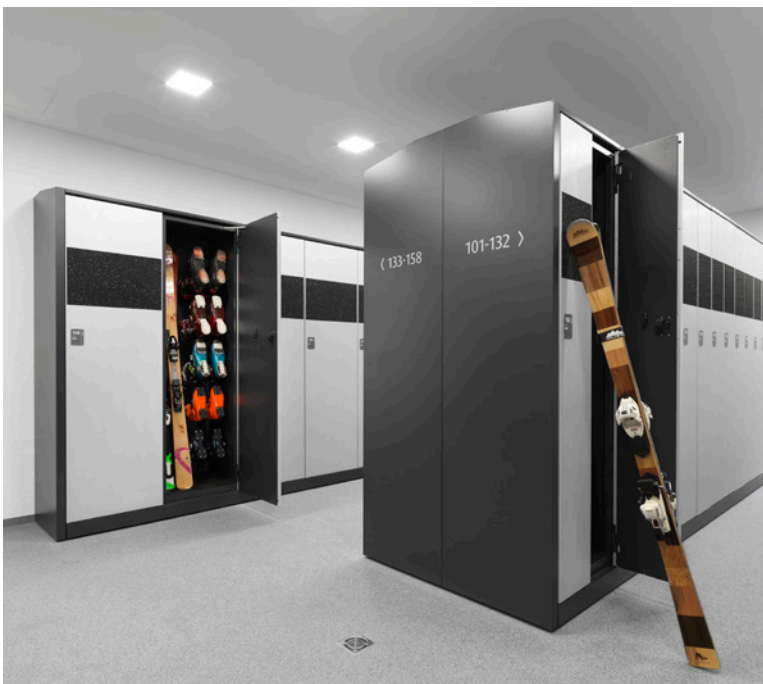
2D planning



3D planning



Implementation



Locker systems

No matter whether you operate a storage or rental business, lift station, hotel, chalet or holiday home, we have the perfect solution for you. Our locker systems can be customized to meet your requirements, the size of your operation, and your customers needs.

WINTERSTEIGER offers a large variety of components to help you operate your storage business in a professional manner: Lockable storage racks, drying and heating units and deodorization can all be customized to match your needs. Visiting guests are always looking for a convenient option to store their ski and snowboard equipment. Allowing them to enjoy the day on the slopes, and then hand over their skis or snowboards to enjoy après-ski activities or return to their hotels. This makes the holiday even more enjoyable for all guests.

Extra variants for greater flexibility

Quality – Made in Austria

- Balanced, harmonious range of ski lockers, from the base model (C Line) to the premium version (S Line)
 - The ski/boot storage lockers are available in a number of different sizes and with a broad selection of optional equipment.
 - Needs-based and flexible. We are particularly adept at providing customer-specific solutions and products for special applications.
 - We exclusively use sendzimizied high-quality thin-gage sheet metal
- from Austria. In combination with a powder coating, we ensure the highest levels of corrosion protection. All doors are extremely robust (special hinges) and are fitted with an opening restrictor.
- Depending on the customer's individual needs or preferences, we can supply lockers with either a proven perforated base system with special rubber mat or an integrated floor pan with practical drain nozzle. With this variant, wastewater is removed by a wet vacuum cleaner – drainage is not necessary.
- In terms of the locker roof, we offer both a slanted roof or a cubic roof (necessary with xDry and hybridDry versions as well as online locking systems).
 - Order your locker with scratch protection pads or a special scratch-resistant powder coating with 3D appearance – everything is possible
 - All ski/boot storage lockers are fitted with innovative, extremely robust drying arms made from anodized aluminum with unique speedDry blow-out end caps from Steurer.



Standard doors

- Solid, single-skinned doors
- Different versions
- Hot-dip galvanized, powder coated
- Optionally available with embossed logo



Sandwich doors

- Double-skinned, highly robust sandwich construction
- High-quality haptics (comparable to solid wood)
- Hot-dip galvanized, powder coated



Alternative surfaces and materials

- For example: Stainless steel

Drying variants

xDry

The xDry system operates according to a recirculation drying principle via a high-quality radial blower, which is built into the roof of the ski storage locker. xDry is low maintenance, quiet, and highly energy-efficient.

hybridDry

The best recirculation and thermal drying combination in one. Ideally, a drying cycle is started with the xDry system in the second half of the night. The thermal drying system can then be switched on separately in the early morning, so that your guests can start their day with equipment that is both warm and dry.

Locking systems

From mechanical (cylinder, quarter-turn, deposit, and non-return locks) to electronic locking systems (numeric code lock, offline and online locking systems), everything is possible.

Decentralized online locking system

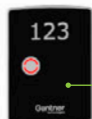
Use of state-of-the-art, 100,000 times proven, online controlled electronic locking systems from the market leader Gantner Technologies (Schruns, Austria). Every locker is fitted with a reader, so that your guests can open and close their lockers with a suitable card (such as a ski pass). This has the advantage of preventing queues at peak times in the morning and afternoon. There is also a built-in interface to the latest rental software packages.



Gantner online lock



PIN-Code lock



Intuitive helmet holder with drying function



Robust doors with special hinges including opening restrictor. Scratch protection pads optional



Options – e.g., mirror, utility nets, hooks



Large range of locking systems



Drying system



New, extremely robust, oval drying arms made from anodized aluminum tubes for ski boots and/or gloves



Cabinet floor perforated and with high-quality, water-permeable rubber mat.

Floor pan optional

S Line

Storage locker

The premium solution

The ski storage lockers in the S Line range offer plenty of space for skis, poles, and boots. The unique and intuitive helmet holder ensures that helmets are thoroughly dried. Glove drying optional. The base is perforated as standard and is fitted with a special high-quality, water-permeable rubber lining. An integrated floor pan with practical drain nozzle can be selected as an option. With this variant, wastewater is removed by a wet vacuum cleaner – drainage is not necessary.

S2_300

Premium

2 people



S2_350

Premium

2 people



S2+1_350

Premium family

3 people



S3_450

Premium family

3 people



S4_600

Premium family

4 people



S4_700

Superior family

4 people



Technical data

Locker	S2_300	S2_350	S2+1_350	S3_450	S4_600	S4_700
Storage						
Drying systems	xDry, ecoDry, hybridDry					
Dimensions (W x H x D)	300 x 2300 x 560 mm	350 x 2300 x 560 mm	350 x 2300 x 560 mm	450 x 2300 x 560 mm	600 x 2300 x 560 mm	700 x 2300 x 560 mm
Connected load	xDry: 30 W ecoDry: 37 W / 46 W* hybridDry: 67 W / 76 W*	xDry: 30 W ecoDry: 37 W / 46 W* hybridDry: 67 W / 76 W*	xDry: 30 W ecoDry: 46 W / 60 W* hybridDry: 76 W / 90 W*	xDry: 30 W ecoDry: 74 W / 88 W* hybridDry: 104 W / 118 W*	xDry: 30 W ecoDry: 74 W / 92 W* hybridDry: 104 W / 122 W*	xDry: 30 W ecoDry: 74 W / 92 W* hybridDry: 104 W / 122 W*
Ski boots	2 pairs	2 pairs	3 pairs	3 pairs	4 pairs	4 pairs
Skis / poles	2 pairs	2 pairs	3 pairs	3 pairs	4 pairs	4 pairs
Helmets	2 pieces	2 pieces	3 pieces	3 pieces	4 pieces	4 pieces

*Glove drying included. We reserve the right to make technical modifications.

S-Compact line

Storage locker

The premium solution for low ceilings

The ski storage lockers in the S-compact line offer plenty of space for skis, poles, and ski boots. The unique and intuitive helmet holder ensures that helmets are thoroughly dried. An integrated floor pan with practical drain nozzle can be selected as an option. With this variant, wastewater is removed by a wet vacuum cleaner – drainage is not necessary.

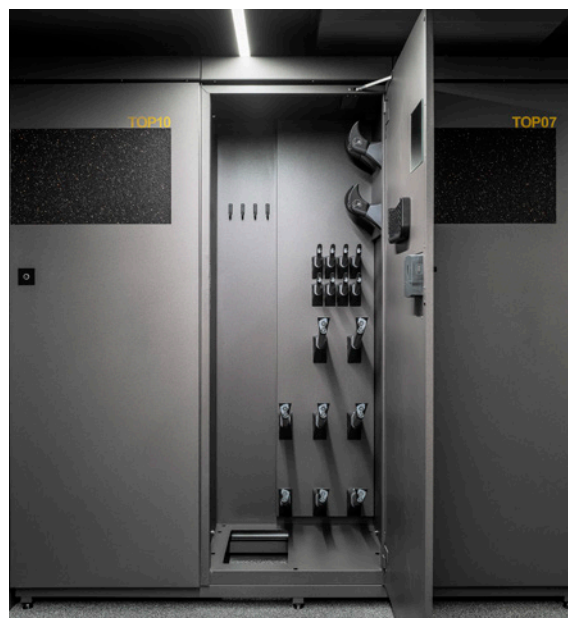
S2_350_Compact

Premium
2 people



S3_500_Compact

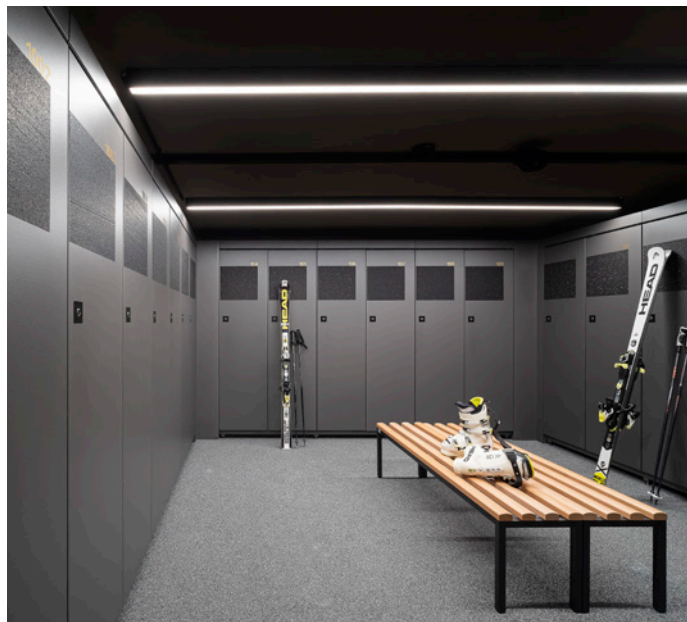
Premium
3 people



S4_700_Compact

Premium

4 people



Technical data

Locker	S2_350_Compact	S3_500_Compact	S4_700_Compact
Storage			
Drying systems	xDry, ecoDry, hybridDry		
Dimensions (W x H x D)	350 x 2050 x 560 mm	500 x 2050 x 560 mm	700 x 2050 x 560 mm
Connected load	xDry: 30 W ecoDry: 37 W hybridDry: 67 W	xDry: 30 W ecoDry: 74 W hybridDry: 104 W	xDry: 30 W ecoDry: 74 W hybridDry: 104 W
Ski boots	2 pairs	3 pairs	4 pairs
Skis / poles	2 pairs	3 pairs	4 pairs
Helmets	2 pieces	3 pieces	4 pieces

We reserve the right to make technical modifications.

C Line

Storage locker

The standard solution

The ski storage lockers in the C Line range offer plenty of space for skis, poles, and boots, and are fitted with helmet hooks. The base is perforated as standard and is fitted with a special water-permeable rubber lining. An integrated floor pan with practical drain nozzle can be selected as an option. With this variant, wastewater is removed by a wet vacuum cleaner – drainage is not necessary.

C2_300

Standard

2 people



C3_450

Standard

3 people



C5_600

Standard

5 people



C6_700

Standard family

6 people



C8_1000

Standard group

8 people



Technical data

Locker	C2_300	C3_450	C5_600	C6_700	C8_1000
Storage					
Drying systems	xDry, ecoDry, hybridDry				
Dimensions (W x H x D)	300 x 2200 x 560 mm	450 x 2200 x 560 mm	600 x 2200 x 560 mm	700 x 2200 x 560 mm	1000 x 2200 x 560 mm
Connected load	xDry: 30 W ecoDry: 37 W hybridDry: 67 W	xDry: 30W ecoDry: 62W hybridDry: 92W	xDry: 30 W ecoDry: 88 W hybridDry: 118 W	xDry: 30 W ecoDry: 124 W hybridDry: 154 W	xDry: 60 W ecoDry: 148 W hybridDry: 208 W
Ski boots	2 pairs	3 pairs	5 pairs	6 pairs	8 pairs
Skis / poles	2 pairs	3 pairs	5 pairs	6 pairs	8 pairs

We reserve the right to make technical modifications.

F Line

Depotschrank

The premium solution for low ceilings

The ski storage lockers in the F line offer plenty of space for skis, poles, and ski boots. The unique and intuitive helmet holder ensures that helmets are thoroughly dried. An integrated floor pan with practical drain nozzle can be selected as an option. With this variant, wastewater is removed by a wet vacuum cleaner – drainage is not necessary.

F2_350

Standard

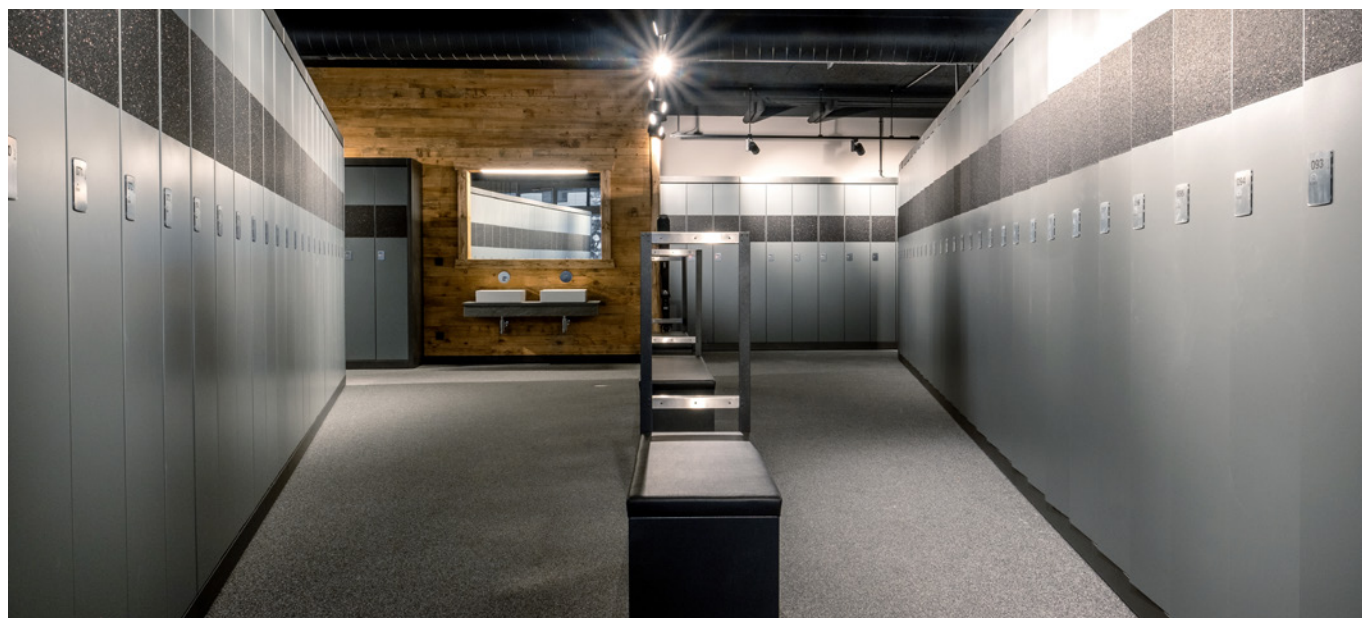
2 people



F4_600


Standard

4 people





Technical data

Locker	F2_350	F4_600
Storage		
Drying systems	xDry, ecoDry, hybridDry	
Dimensions (W x H x D)	350 x 2000 x 560 mm	600 x 2000 x 560 mm
Connected load	xDry: 30 W ecoDry: 37 W hybridDry: 67 W	xDry: 30 W ecoDry: 74 W hybridDry: 104 W
Ski boots	2 pairs	4 pairs
Skis / poles	2 pairs	4 pairs
Helmets	2 pieces	4 pieces

We reserve the right to make technical modifications.

E Line

Combi storage locker

The combi solution

As a combination locker, the E2 ski storage locker offers even more space for ski equipment. In addition to the standard features of a conventional ski locker, this locker type is fitted with a clothes compartment to provide ample space for helmet, gloves, protectors, and more. Adjustable trays in the clothing compartment and a built in clothing rail means that this solution can be assembled quickly and easily. The base is perforated as a standard and is fitted with a special water-permeable rubber lining. An integrated floor pan with practical drain nozzle can be selected as an option. With this variant, wastewater is removed by a wet vacuum cleaner – drainage is not necessary.

E2_600

Combi

2 people





Technical data

Locker	E2_600
Storage	
Drying systems	xDry, ecoDry, hybridDry
Dimensions (W x H x D)	600 x 2200 x 560 mm
Connected load	xDry: 30 W ecoDry: 37 W hybridDry: 67 W
Ski boots	2 pairs
Skis / poles	2 pairs
Helmets	2 pieces

We reserve the right to make technical modifications.

D Line

Locker systems

You can trust the locker systems in the D Line to keep bags and valuables safe and sound. Install our locker systems at your ski resort and offer your guests even greater levels of convenience.

D2_350

Locker system



2 x D2_350 Locker

D3_350

Locker system



2 x D3_350 Locker



D4_350

Locker system



2 x D4_350 Locker

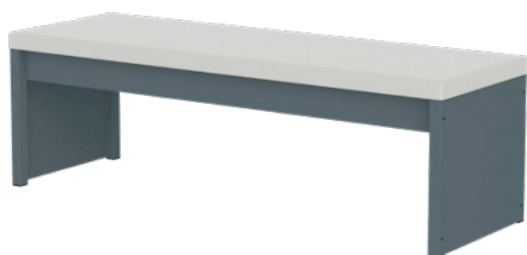
Technical data

Locker	D2_350	D3_350	D4_350
Storage			
Dimensions (W x H x D)	350 x 2200 x 560 mm	350 x 2200 x 560 mm	350 x 2200 x 560 mm

We reserve the right to make technical modifications.

The designer bench for every taste and every need

Shaped tubular frames belong to the past. With this designer bench, you will always be making the right choice. It impresses through its timeless yet robust design. Optionally available with a ski rest.



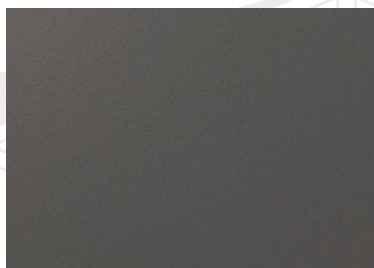
Technical data

Dimensions (W x H x D)	1000 / 1500 / 2000 x 400 x 400 mm
Frame material	Hot-dip galvanized, power-coated sheet steel
Seat material	Slatted (Finnish birch), solid wood (oiled oak), padding (fabric / artificial leather)

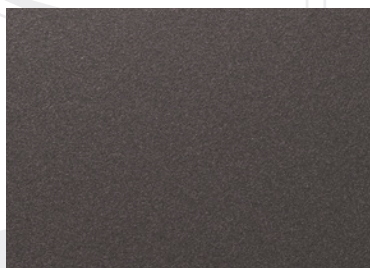
We reserve the right to make technical modifications.



Standard colours



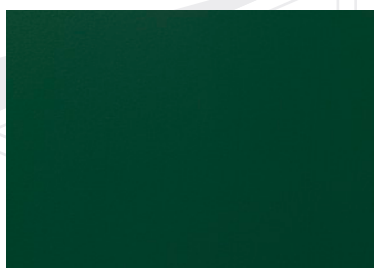
Basalt grey, RAL 7012



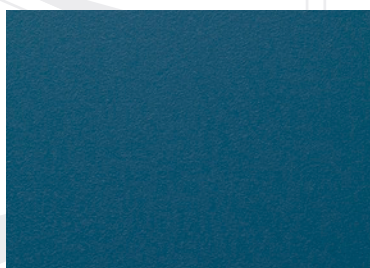
Steurer Iron grey



Steurer Carbon



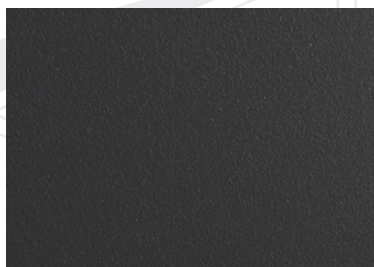
Patina green, RAL 6000



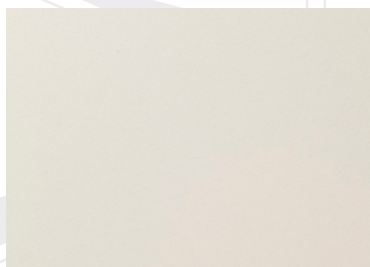
Azure blue, RAL 5009



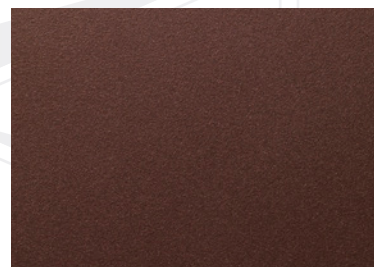
Traffic red, RAL 3020



Anthracite grey, RAL 7016



Pure white, RAL 9010

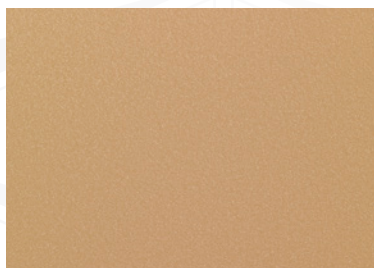


Steurer Rust Mica

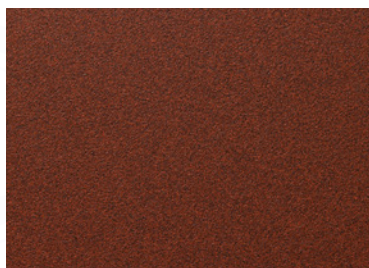


Steurer Architectural bronze

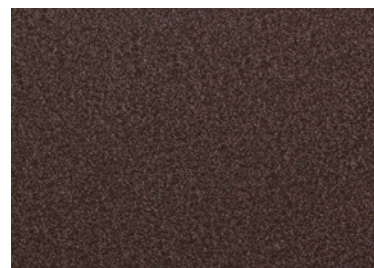
Premium colours



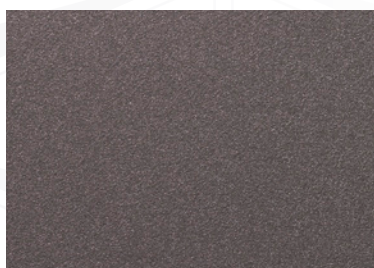
Steurer beige 3D, RAL 1001



Steurer growing rust, fine



Steurer brown 3D

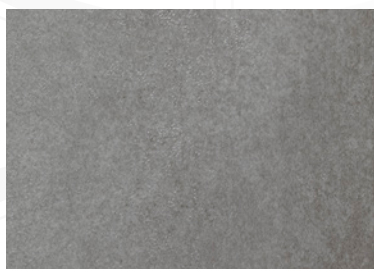


Steurer iron grey mica, fine

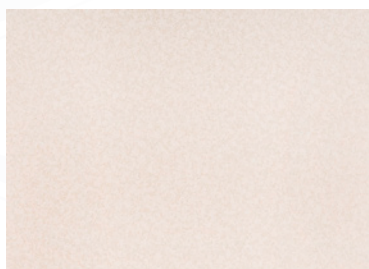


Steurer black 3D

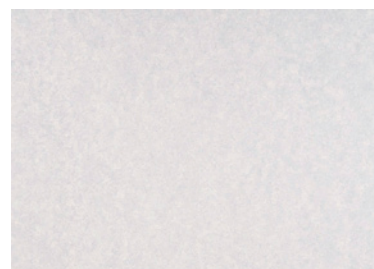
Concrete & Stone Look



Steurer 1481

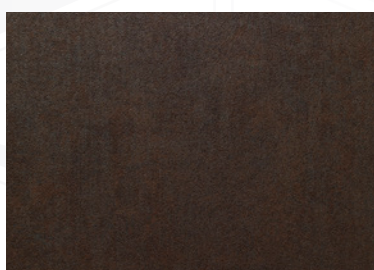


Steurer 1370



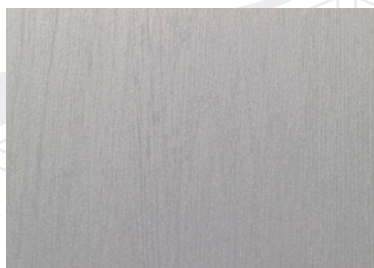
Steurer 1349

Corrosive Metal Look

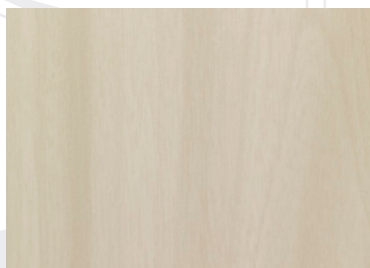


Steurer 1391

Wood Look



Steurer 1411



Steurer 1206



Steurer 1317



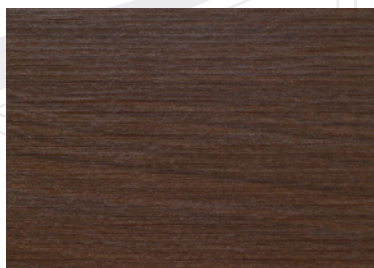
Steurer 1030



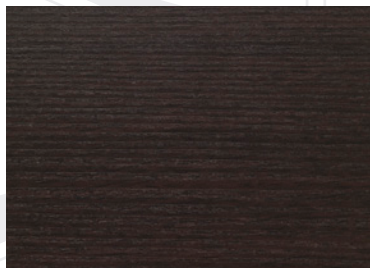
Steurer 1032



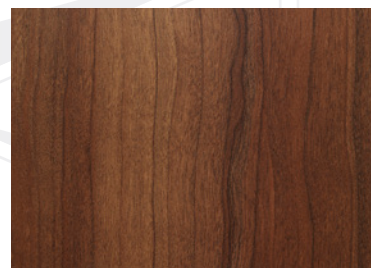
Steurer 1392



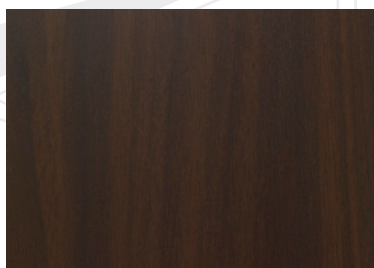
Steurer 1022



Steurer 1020



Steurer 1320

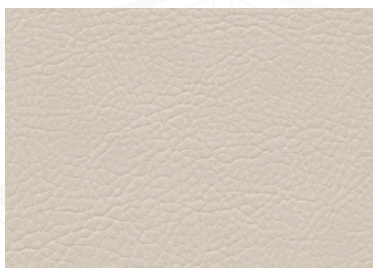


Steurer 1361

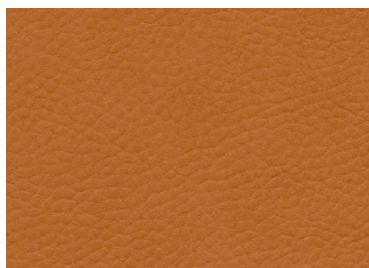


Steurer 1431

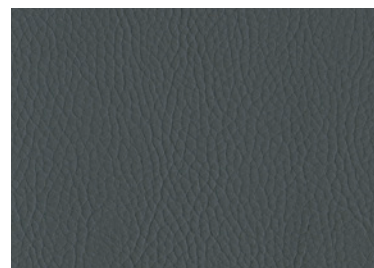
Bench with faux leather cover



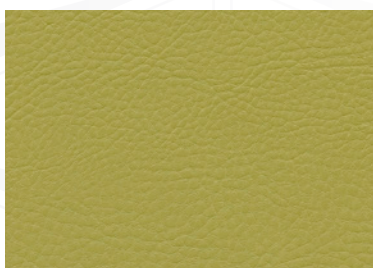
Perle*¹



Cognac*¹



Anthracite*¹



Pistache*¹

Bench with textile cover



Cappuccino*²



Silver*²



Anthracite*²



Pistache*²

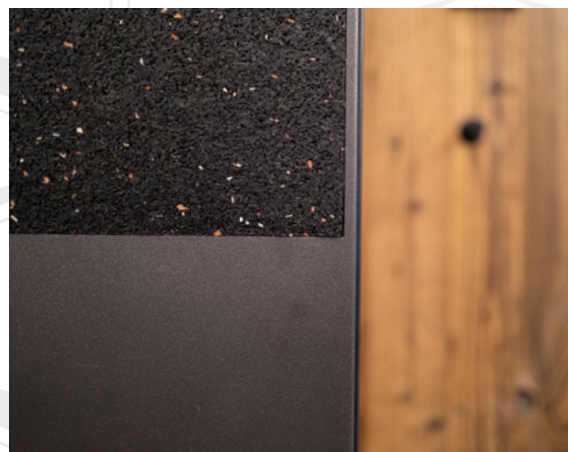
*¹ decovin® nappa, Source: Winter Creation AG

*² microweb® chenille FR, Source: Winter Creation AG

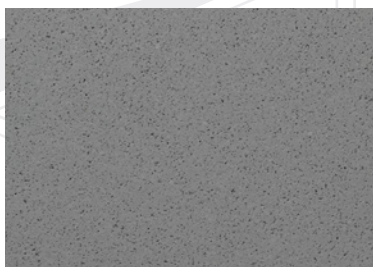
Scratch protection pad



Steurer standard



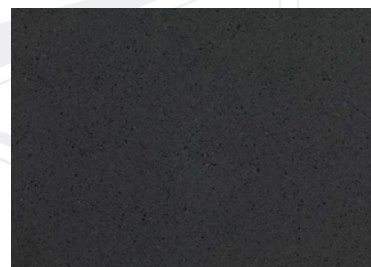
Premium



Steurer Berlin

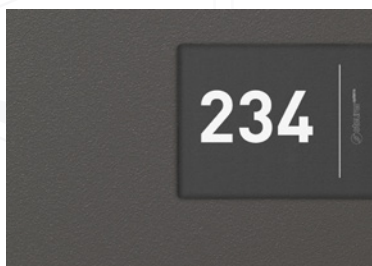


Steurer Oslo

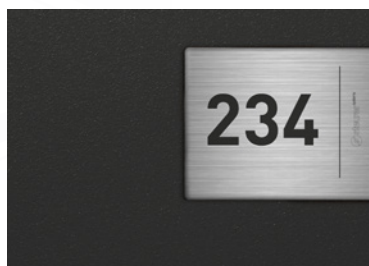


Steurer Mons

Adhesive numbers



Grey



Stainless steel look





 **WINTERSTEIGER**
Thinking about tomorrow.

EN 78-700-101 Easystore Depot Version 01/2025, Print 01/2025.
Photo: WINTERSTEIGER, innpuls Werbeagentur GmbH, Adobe Stock.
© WINTERSTEIGER. www.wintersteiger.com



wintersteiger.com/contact