





Easystore Tailor-made solution – something for everyone.

WINTERSTEIGER's rental, storage and drying systems have an impressive modern design, are extremely flexible and rugged and offer many new solutions rendering them highly functional.

Using the many years of experience gained by being the world's leader in rental and repair solutions, SKI 2 and WINTERSTEIGER has developed the Easystore line of racks and furniture. The research and design of these products included significant contributions from the feedback and requests of customers throughout the world, as well as working in collaboration with shop designers and a renowned development and design agency.

Experience the difference that will make you more successful!



From planning to implementation. Our experience is your advantage.

WINTERSTEIGER offers a full service support program to create the ideal rental and storage business from initial design to installation. By developing optimal customer flow from the moment the customer arrives in the store to issuing equipment helps speed up processing times and makes work easier.

1 Check-In

2 Bootfitting / Drying / Disinfection

3 Snowboard

4 Skis / Poles

5 Cash



2 D-planning



3 D-planning



Contents:

STORAGE SYSTEMS	6
General Features	9
Ski Rack	12
Ski Rack 30°	14
Snowboard Rack	16
Hanging System	17
Universal Rack	18
Ski Pole Rack	20
Ski Pole Stand	21
Boot Rack	22
Return Rack	23
Transport Rack, Workshop Boot Rack	24
Systems for Wall-Mounting	25
 DRYING / DISINFECTION	 26
Easyfresh Boot / Helmet Disinfection Unit	30
Innova Boot / Helmet Dryer	31
Optima Boot Dryer	32
Premia Boot Dryer	33
Premia Pro Boot Dryer	34
 SHOP SYSTEMS	 36
 LOCKER SYSTEMS	 38
 After Sales Service	 40
WINTERSTEIGER SPORTS	41
WINTERSTEIGER Worldwide	43

1

2

3

4





With Easystore
you simply have more inventory.

The basic structure is the same for all racks, which allows them to be customized for individual requirements. The newly integrated lettering and numbering system meets requirements for use in the ski check and depot area as well.

Rack for rack the last word
in design and function.



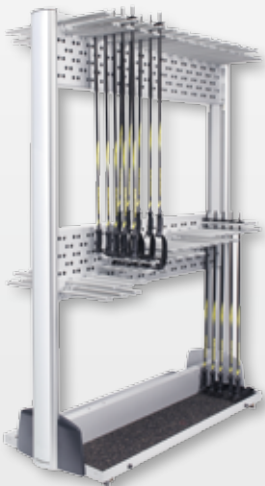
Ski Rack



Combination Rack



Ski Rack 30°



Ski Pole Rack



Ski Pole Stand



Boot Rack

The Easystore storage systems provide largest amount of storage in the smallest amount of space due to their impressive design concept!



Ski Rack 30° twin level



Snowboard Rack



Hanging System



Universal Rack



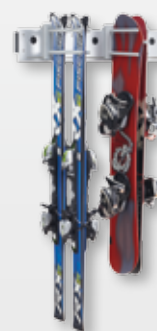
Return Rack



Transport Rack



Workshop Boot Rack



Systems for Wall-Mounting

General features of storage systems.

1



For optimum space efficiency the racks on rails can be mounted together for a total length of up to 500 cm / 198" (2 racks with 250 cm / 99").



All racks come with a drainage system to give you a clean environment in your rental shop. The racks are available on rail wheels or castor wheels



Optional trip guard on the rails helps to ensure safety



All racks can be equipped with a handle

Easystore Front Panels

Perfect in appearance. Sophisticated in detail.

The Easystore front panels give you the possibility to design your rental shop according to your individual needs and incorporate it into your store concept.

Our sales reps will be happy to offer advice for putting your ideas and requirements into practice.

Even existing rental shops can use this solution to update their racks in line with the latest trends.

The uniform, contemporary rack design allows your rental business to be incorporated into your store concept! It is possible to illuminate the front pillar of the racks to attract attention to specific locations.



Ski Rack

The perfect solution for rental and workshop.

- Simple clamping system for storing all types of skis (alpine, carver, freeride etc.) as well as many types of snowboards, snowbikes etc.
- Easy placement and removal of skis
- Height adjustable cross-bar support
- Also available as stationary model **1**



Capacities

Width: 51 cm (20")

Track width in cm (inch)	Length in cm (inch)
50 (19")	71 (27")
100 (39")	123 (48")
120 (47")	141 (55")
150 (59")	170 (67")
170 (67")	189 (74")
200 (79")	223 (88")
250 (99")	269 (105")

Height: 150 cm (59")

Pairs of skis 117 mm (4.6") width
8
18
20
26
28
34
42

Single level

Height: 243 cm (95")

Pairs of kids / junior skis 105 mm (4.1") width
-
40
48
56
64
72
96

Twin level

Optional:

- Combination rack for storage of boots and helmets (Height: 243 cm / 95") **2**
- Additional crossbar for helmets **3**
- Ski rack with pole level for storage of ski poles (Height: 203 cm / 80") **4**
- Ski rack twin level for storage of kids skis (Height: 243 cm / 95")



Ski Rack 30°

Attractive presentation of all skis, displayed at a 30° angle.

- Clip system for easy placement and removal of skis (up to 120 mm wide) **1**
- Height adjustable crossbar support
- Lettering system for space numbering in ski check and depot **2**
- Pole rack system for depot **3**

Practical pole rack system - perfect for depot!



Capacities

Width: 51 cm (20")		Height: 150 cm (47")	Height: 243 cm (95")
Track width in cm (inch)	Length in cm (inch)	Pairs of skis	Pairs of kids / junior skis
100 (19")	123 (48")	16	32
120 (39")	141 (55")	20	40
150 (47")	170 (67")	24	48
170 (59")	189 (74")	26	52
200 (67")	223 (88")	32	64
250 (99")	269 (105")	40	80

Single level

Twin level

Optional:

- Combination rack for storage of boots and helmets (Height: 243 cm / 95") 4
- Additional crossbar for helmets 5
- Ski rack with pole level for storage of ski poles (Height: 203 cm / 80") 6
- Ski rack twin level for storage of kids skis (Height: 243 cm / 95")



4



5



6



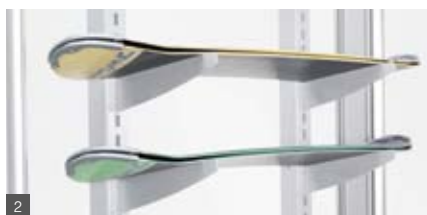
Snowboard Rack

All snowboards stored in the smallest possible amount of space.

- Optimal use of space and attractive product presentation
- New forks featuring a better grip
- Easy assembly and adjustment of forks in 5 cm / 2" increments
- 250 cm rack offers a middle vertical support to double up the capacity **1** (as option for 200 cm rack)

Optional:

- Available with forks angled at 30° down or 10° upwards **1** **2**
- Binding storage boxes for removable rental bindings (for 200 and 250 cm / 79" and 99" racks) **3**
- Wall-mounted edition (see page 25)



Capacities

Width: 76 cm (30"), Height: 203 cm (80")

Track width in cm (inch)	Length in cm (inch)	Snowboards with soft binding (downward forks)	Snowboards without binding (upward forks)
150 (47")	170 (67")	36	128
170 (59")	189 (74")	36	128
200 (67")	223 (88")	36 / 68*	128
250 (99")	269 (105")	68	128

Width: 76 cm (30"), Height: 243 cm (95")

Track width in cm (inch)	Length in cm (inch)	Snowboards with soft binding (downward forks)	Snowboards without binding (upward forks)
150 (47")	170 (67")	44	160
170 (59")	189 (74")	44	160
200 (67")	223 (88")	44 / 84*	160
250 (99")	269 (105")	84	160

*Option 3. Vertical middle support

Hanging System

All size skis and snowboards on one rack.

- Can be used with both ski or snowboard forks
- 2 different lengths of ski forks
- Easy adjustment of forks
- For up to 4 levels, each individually height adjustable

Optional:

- Additional levels
- Forks for snowblades
- Hanging system forks for wall-mounting (see page 25)



Capacities

Width: 76 cm (30")		Height 203 cm (80")		Height 243 cm (95")	
Track width in cm (inch)	Length in cm (inch)	Pairs of skis adult / children / children	Snowboards soft binding / without binding	Pairs of skis adult / children / children	Snowboards soft binding / without binding
100 (39")	123 (48")	42 ^A / 60 ^A / 80 ^B	12 / 40	42 / 108 ^C / 144 ^D	20 / 44
120 (47")	141 (55")	54 ^A / 72 ^A / 96 ^B	16 / 44	54 / 132 ^C / 176 ^D	28 / 60
150 (59")	170 (67")	66 ^A / 84 ^A / 112 ^B	20 / 56	66 / 156 ^C / 208 ^D	36 / 76
170 (67")	189 (74")	78 ^A / 96 ^A / 128 ^B	20 / 64	78 / 180 ^C / 240 ^D	40 / 84
200 (79")	223 (88")	90 ^A / 120 ^A / 160 ^B	24 / 76	90 / 228 ^C / 304 ^D	44 / 92
250 (99")	269 (105")	114 ^A / 144 ^A / 192 ^B	32 / 92	114 / 276 ^C / 368 ^D	60 / 116

^A 1 additional level, fork length 330 mm

^B 1 additional level, fork length 410 mm

^C 2 additional levels, fork length 330 mm

^D 2 additional levels, fork length 410 mm

Universal Rack

The universal rack for all types of sports equipment.

- 2 levels of perforated panels for attaching all types of accessory for hanging helmets, snowshoes, clothing, bicycles and much more
- Simple adjustment of accessories
- Each level is individually height adjustable



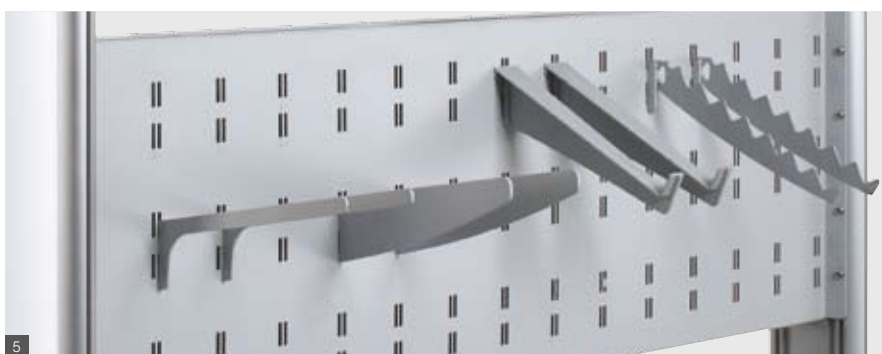
Dimensions:
Height: 203 cm / 80" and 243 cm / 95",
Width: 76 cm / 28"
Track width: 100, 120, 150, 170, 200 and 250 cm /
40, 48, 59, 67, 79 and 99"



The versatile rack for
all types of sports
equipment.

Optional:

- Additional levels
- Helmet fork **1**
- Bicycle fork **2**
- Waterfall fork **3**
- Universal fork **4**
- Snowboard fork **5**
- Ski pole fork **6**
- Forks for skis and snowboards **6**
- Clothing rail **7**
- Other forks on request



Ski Pole Rack

Functional and space efficient.

- Dual-sided rack with 1 or 2 levels
- Levels individually height adjustable
- Lettering system for pole lengths **1**
- Height: 150 cm / 59" (1 level) and 243 cm / 96" (2 levels up to 278 cm / 110")

Optional:

- Additional forks for poles



Capacities

Track width in cm (inch)	Dimensions L x W in cm (inch)	Pairs of poles 1 level	Pairs of poles 2 levels
150 (59")	170 x 76 (67 x 28")	168	336
170 (67")	189 x 76 (74 x 28")	186	372
200 (79")	223 x 76 (88 x 28")	228	456
250 (99")	269 x 76 (105 x 28")	276	552

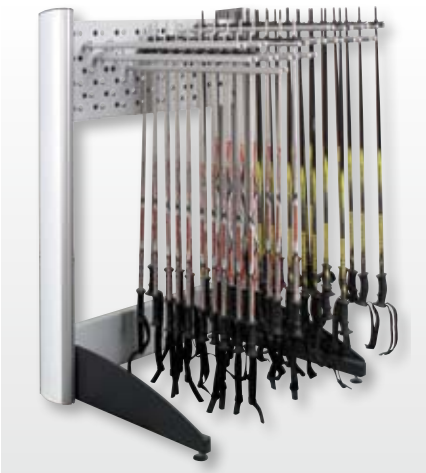
Ski Pole Stand

Fast and easy access.

- 1 or 2 levels, each individually height adjustable
- Lettering system for pole lengths
- Height: 150 cm / 59" (1 level) and 243 cm / 96" (2 levels up to 278 cm / 110")

Optional:

- Additional forks for poles



Capacities		
Dimensions W x D in cm (inch)	Pairs of poles 1 level	Pairs of poles 2 levels
108 x 89 (42 x 36")	119	238
154 x 89 (59 x 36")	175	350

Boot Rack

Functional storage to keep boots in order.

- Easy adjustment of shelves
- Lettering system for space numbering in ski check and depot ¹
- Central drainage system ²

Optional:

- Extra shelves for kids and X-country boots
- Top shelf safety bar ¹
- Adapter for inline skates and ice skates ³



Capacities

Width: 51 cm (20")		Height: 203 cm (80")		Height: 243 cm (95")	
		Pairs of ski boots		Pairs of ski boots	
Track width in cm (inch)	Length in cm (inch)	Kids	Adult	Kids	Adult
100 (39")	123 (48")	44*	30	56**	36
120 (47")	141 (55")	55*	40	70**	48
150 (59")	170 (67")	66*	50	84**	60
170 (67")	189 (74")	77*	60	98**	72
200 (79")	223 (88")	99*	70	126**	84
250 (99")	269 (105")	121*	80	154**	96

* 1 additional shelf

** 2 additional shelves

Calculation based on: Size of ski boots for adults MP 29 and kids MP 20.

Return Rack

Ideal for rental returns of skis, boots and snowboards.

- Height adjustable level for ski and snowboard forks
- Individual use of ski and snowboard forks
- Height adjustable and removable shelves for ski boots ¹
- Castor wheels for transport between stores and workshops

Optional:

- Handles ²



Dimension: 123 x 76 x 208 cm / 48 x 30 x 82" (L x W x H)



Transport Rack

Safe transport of skis and snowboards.

- Optional version with wheels for indoor and outdoor area **1**
- Locking rod for skis and snowboards
- Large wheels with rear axel and brakes for easy transport on uneven surface

Optional:

- Lockable with optional padlock



Capacities

Height: Indoor 153 cm (60") / Outdoor 164 cm (65")		
Width in cm (inch)	Length in cm (inch)	Pairs of skis 117 mm (4.6") width
60 / 65	71 (28")	8
60 / 65	123 (48")	18

Workshop Boot Rack

Safe transport of boots.

- 8 shelves
- Height: 150 cm (59")

Optional:

- Extra shelves



Capacities

Width in cm (inch)	Length in cm (inch)	Pairs of ski boots
51 (20")	123 (48")	24 - 32
51 (20")	141 (56")	32 - 40
51 (20")	170 (69")	40 - 48

Systems for Wall-Mounting

Optimum utilization of space.

- Wall mount track (Height 200 cm / 79", 1 pair) for snowboard forks **1**
- Wall mount track hanging system (100 cm / 39") for standard forks **2**
- Single sided ski rack (50, 100, 200 cm / 19", 39", 79") can be used for floor presentation or as wall mount **3**
- Aluminum uprights (Height 150, 200, 240 cm / 59", 79", 94") suitable for all additional levels of boot racks, hanging systems and universal racks **4**
- Wall mount ski pole level (100 cm / 39") for 126 pairs of poles **5**
- Wall mount ski and snowboard forks without track **6**

Components of the individual systems are also available for wall-mounting.

1







Easystore High-speed drying in minimum space.

The Easystore boot dryers provide the highest capacity in a small space, dry quickly, disinfect efficiently, deodorize and offer a whole range of new features!

The optimized air flow system guarantees the most efficient and shortest drying times with an efficient disinfection. The large illuminated LCD display on the front pillar of the dryer shows your customer which step of the process the dryer is currently carrying out (ambient air, hot air, disinfecting).

The integrated lettering and numbering system meets the requirements for use in the ski check and depot area. Furthermore, the dryer may be customized to match the individual design of your shop using your own colors, integrated logos, distinctive lettering and much more!

The perfect models
spot-on for every size.

2



Easyfresh
Boot-/Helmet Disinfection Unit



Innova Helmet Dryer



Innova Boot Dryer
(5 pairs)



Innova Boot Dryer
(15 pairs)

The Easystore boot dryers provide the highest capacity in a small space, dry quickly, disinfect efficiently, deodorize and offer a whole range of new features!

2



Optima Boot Dryer



Premia Boot Dryer



Premia Pro Boot Dryer

Easyfresh Boot-/Helmet Disinfection Unit

Hygienically fresh boots and helmets.

- The flow rate and spraying duration may be adjusted on operating panel
- Operation with compressed air (6 bar) from a compressor
- Space for 2 separate canisters each containing 5 l (1 disinfectant for boots and 1 disinfectant for helmets)

Optional:

- Helmet disinfection ¹
- Compressor

Disinfection provides protection by reducing bacteria and pathogens.

Disinfection should simply be a matter of course as it guarantees a reduction in bacteria and pathogens. Disinfection is the first and most important step in the sterilization cycle.

As a result the user can rest assured that your helmets and ski boots are in an exceptionally hygienic condition after disinfection, thus reducing the risk of catching any diseases.



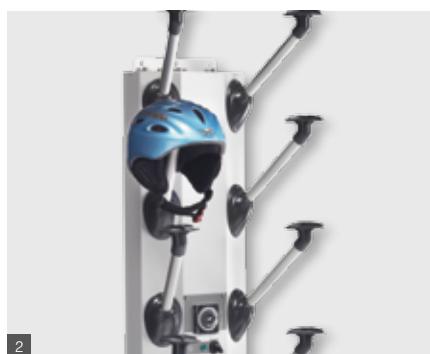
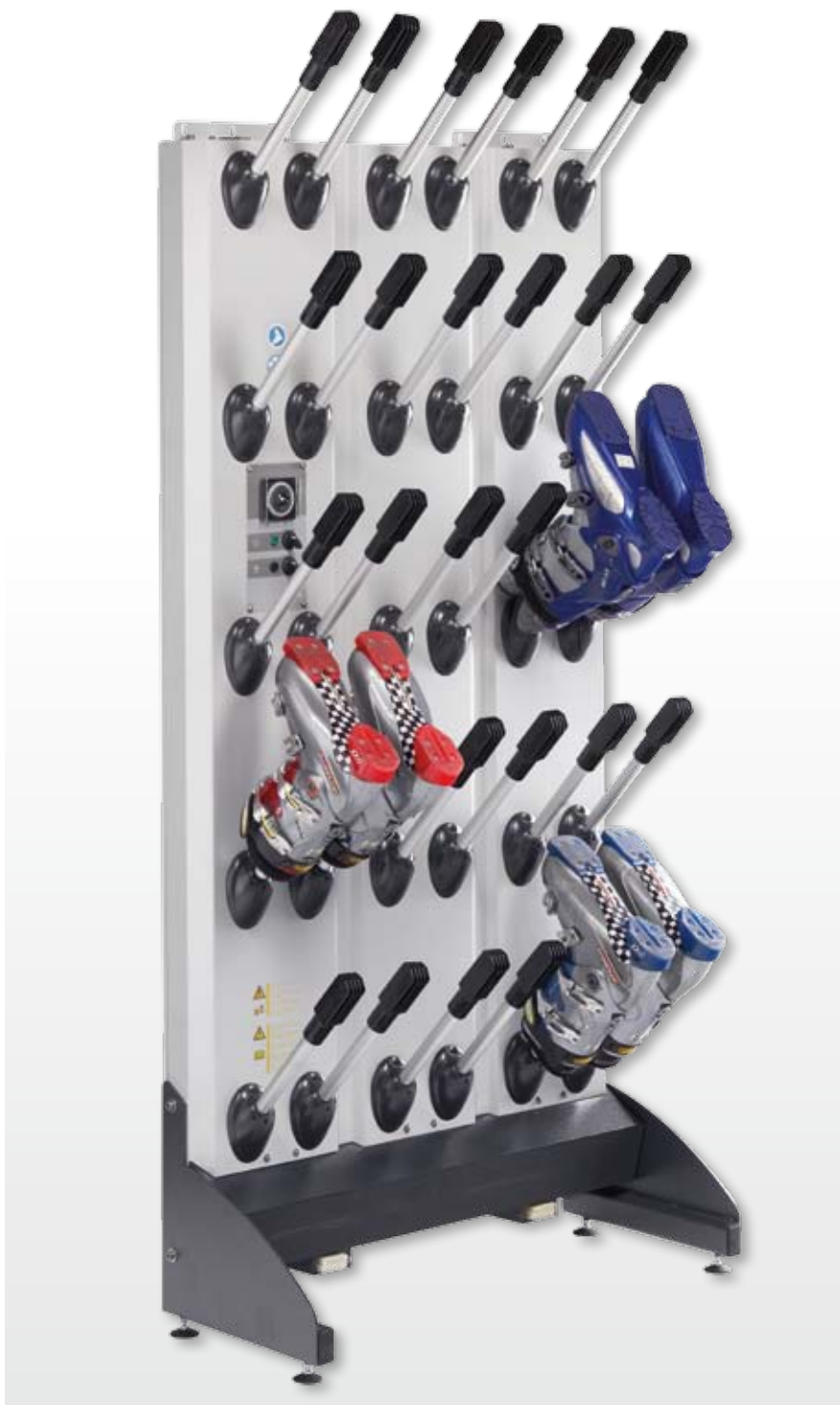
Innova Boot/Helmet Dryer

Space efficient, economical and effective.

- Single-sided wall mounted warm air dryer
- Available for: 5 pairs of boots ¹, 15 pairs of boots, 14 helmets ²
- Air flows only from nozzles that have boots over them
- Air disinfection through germicidal ozone lamp
- Deodorization through aromatic bar
- Simple operation with programmable clock

Optional:

- Floor stand
- Cover for operating unit



Dimensions incl. boots and stand:

224 x 34 / 94 cm (5/15 pairs) x 41 cm (H x W x D) 88 x 13 / 37" (5/15 pairs) x 16" (H x W x D)

Dimensions incl. helmet and stand: 206 x 34 x 41 cm / 81 x 13 x 41" (H x W x D)

Supply voltage: 208 – 230V 1 AC 50/60 Hz / 110 volt, 10/16 A

Electricity consumption: 500/1000 W (5 pairs, helmet); 1000/2000 W (15 pairs)

Optima Boot Dryer

The universal dryer for rental and ski check.

- Double-sided ambient and warm air dryer
- Easy adjustment of boot shelves
- Optimized air flow system ¹
- Air disinfection through germicidal UV lamp
- Deodorization through aromatic bar
- Simple operation with programmable clock
- Swing open front panel

Optional:

- Illumination for front pillar
- Extra shelves with drying unit
- Helmet dryer version ²
- Adapter for inline skates and ice skates ³
- Display front (page 35)
- Cover for rear



Supply voltage: 208 – 230V 1 AC 50/60 Hz 12/16 A

Electricity consumption 204 cm / 80":
ambient air 600 W, warm air: 1900 W

Electricity consumption 243 cm / 95":
ambient air 700 W, warm air: 2300 W



Capacities

Width: 54 cm (21")		Height: 204 cm (80")		Height: 243 cm (95")	
		Pairs of ski boots		Pairs of ski boots	
Track width in cm (inch)	Length in cm (inch)	Kids	Adult	Kids	Adult
150 (59")	174 (67")	54*	40	72**	50
170 (67")	192 (74")	63*	44	84**	55
200 (79")	226 (88")	76*	52	102**	65
250 (99")	272 (105")	94*	64	126**	80

* 1 additional shelf

** 2 additional shelves

Calculation based on: Size of ski boots for adults MP 29 and kids MP 20

Premia Boot Dryer

High-End in both space efficiency and technology.

- Double-sided warm air dryer
- New arrangement of nozzles for best possible utilization of space
- Air flows only from nozzles that have boots over them
- New air flow system; the air from the boots is directed back through the nozzle, disinfected and recirculated to the central fan
- Air disinfection through germicidal UV lamp
- Deodorization through aromatic bar
- Simple operation with programmable clock
- Central heating unit features 3 levels

Optional:

- Illumination for front pillar
- Display front 



Supply voltage: 380 – 415V 3/N AC 50 Hz, 16/16 A

Electricity consumption:
Heater OFF/Level 1/2/3: 300/2500/4700/6900 W



Capacities					
Width: 78 cm (31")		Height: 213 cm (84") incl. boots: 225 cm (88")		Height: 253 cm (100") incl. boots: 265 cm (104")	
Track width in cm (inch)	Length in cm (inch)	Pairs of ski boots		Pairs of ski boots	
150 (59")	175 (67")	50		60	
170 (67")	193 (74")	55		66	
200 (79")	227 (88")	70		84	
250 (99")	273 (105")	85		-	

Premia Pro Boot Dryer

High-End in both space efficiency and technology.

- Double-sided warm air dryer
- New arrangement of nozzles for best possible utilization of space
- Air flows only from nozzles that have boots over them
- New air flow system: The air from the boots is directed back into the nozzle, disinfected and recirculated to the central fan
- Disinfectant through liquid vaporizing unit
- Deodorization through disinfectant liquid (page 37)
- Operation with touch display ¹
- Central heating unit features 3 levels

Optional:

- Illumination for front pillar
- Display front ²



Supply voltage:
380-415V 3/N AC 50 Hz, 16/16 A

Electricity consumption:
Heater OFF/Level 1/2/3: 300/2500/4700/6900 W

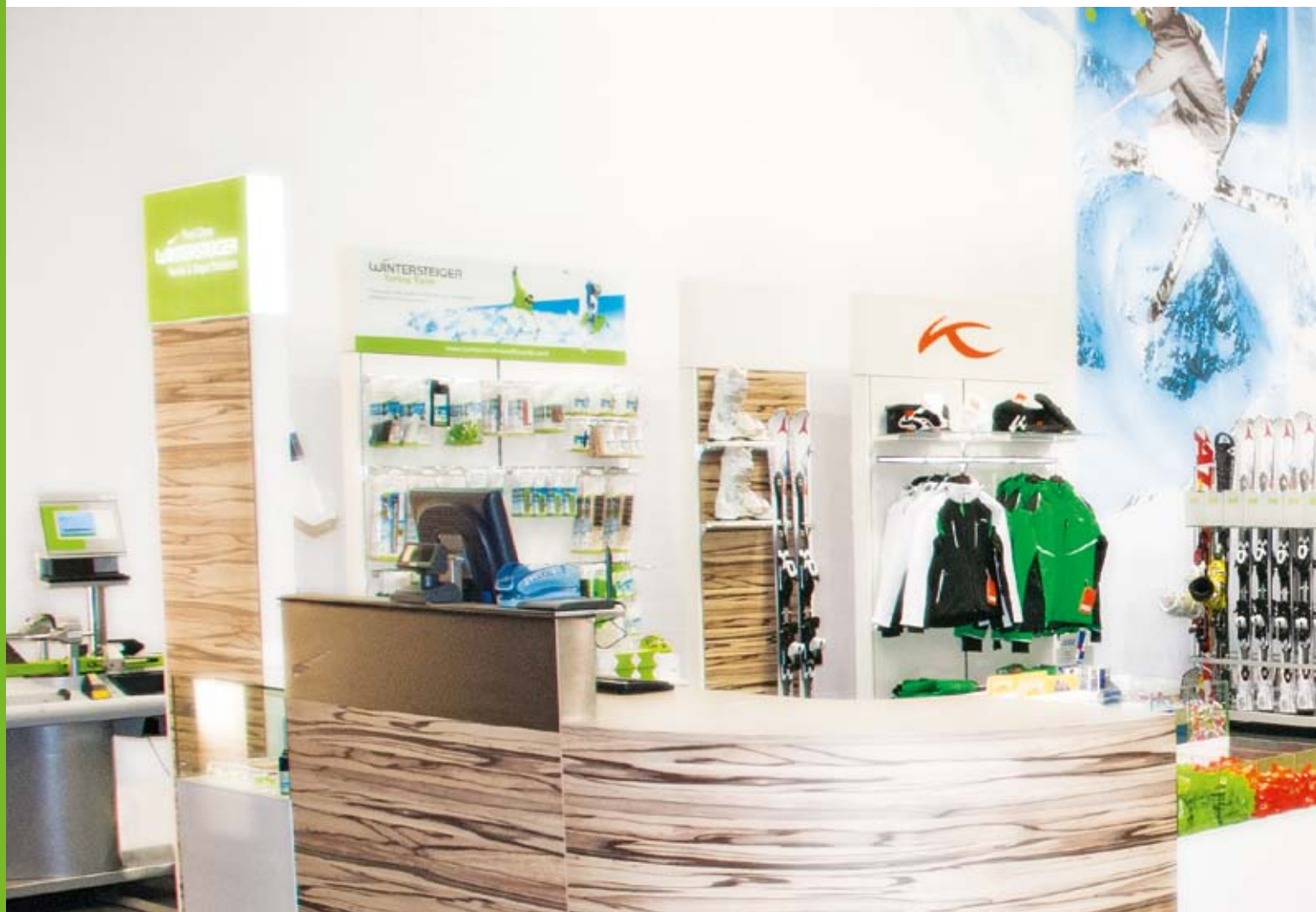


Capacities

Width: 78 cm (31")		Height: 213 cm (84") incl. boots: 225 cm (88")	Height: 253 cm (100") incl. boots: 265 cm (104")
Track width in cm (inch)	Length in cm (inch)	Pairs of ski boots	Pairs of ski boots
150 (59")	175 (67")	50	60
170 (67")	193 (74")	55	66
200 (79")	227 (88")	70	84
250 (99")	273 (105")	85	-

Disinfection with Premia Pro:





Easystore makes trendy design system-compatible.

The WINTERSTEIGER Easystore shop systems have an impressive modern design, are extremely flexible and highly functional. The materials used are tough and rugged in both quality and construction. The color scheme has been chosen to match our rental, storage and drying systems.

The uniform, contemporary shop system design allows your rental business to be incorporated into your store concept! Illumination of the front pillar is one option that may be incorporated. It is also possible for us to tailor the design to your individual needs using your own colors, integrated images and logos, distinctive lettering and much, much more! It is also possible to create an individual design for the front of each unit.

Please request the Easystore shop furniture brochure for detailed information about customized locker solutions.



3





Easystore

Tailor-made storage solutions – the right choice for everyone.

Easystore locker systems by WINTERSTEIGER make an impression with state-of-the-art design, maximum flexibility and stability, and maximum storage capacity on a minimal footprint. Customized features allow you to choose your own colors, logos, visuals and labeling to customize the locker design.

Thanks to our partnership with Gladek Technik in the field of storage lockers, our range of rental, storage and drying systems has become even more versatile. We plan storage lockers individually based on your requirements, taking maximum space utilization, drying and disinfection into account and at the same time catering to your access system needs.

Our Easyrent rental, storage and POS software makes storage management unbelievably fast and easy. It also features a simple module for managing and lock control for the Easystore locker systems.

Benefit from our experience. WINTERSTEIGER supports you from the planning phase all the way to implementation of your perfect storage facility. Read the following pages to discover in detail what WINTERSTEIGER offers you.

Please request the Easystore locker systems brochure for detailed information about customized locker solutions.



4



WINTERSTEIGER complete. Customer services.

WINTERSTEIGER sees its mission not only in the manufacture of innovative products for optimum customer benefit. Our demands and expectations go far beyond that. We understand the need for an accompanying partnership process that includes a range of optional services:

From planning to implementation

WINTERSTEIGER provides complete system solutions for individual customer-specific requirements in all aspects of rental and servicing of skis and snowboards, including 3D planning, amortization and profitability analyses.

Strong customer service team

A large team of extremely well-trained service technicians takes comprehensive care of the following:

- Machine set up
- Training courses
- Service stop-bys
- Preventive maintenance
- Advice
- Modifications
- Problem solving
- Repairs
- Support
- Fast spare parts supply

Staff at the ready

On request, WINTERSTEIGER can also provide you with qualified staff for the entire ski season. Your benefits:

- No searching for skilled staff
- WINTERSTEIGER technicians with ski servicing expertise
- Calculable wage costs

Individually tailored finance packages

WINTERSTEIGER can offer you individually tailored finance packages, e.g. leasing or invoicing according to servicing demand.

Marketing Partnership

WINTERSTEIGER will support you in advertising your ski service. Together we will optimize your efficiency using professional advertising materials.



Victories are developed in the mind. And with WINTERSTEIGER.

WINTERSTEIGER is the world market leader in service and rental solutions for the entire ski and snowboard sport. Sport shops, rental stations, well known ski and snowboard producers as well as leading ski federations trust in the system solutions and first class service from WINTERSTEIGER.

WINTERSTEIGER develops innovative system solutions for the rental and service of ski and snowboards. With this we concentrate highly on and take into consideration the various needs of our customers as well as recognizing the trends early enough to allow them to be brought into the product development.

With this strategy WINTERSTEIGER has established itself as competent partner in the planning and development of service work shops and rental stations. We accompany our customers starting with the evaluation of customer needs, the planning, financing solutions, trainings, personnel leasing, professional marketing support, all the way to our reliable after-sales-service.

The product range of Division SPORTS at a glance:

- Fully automatic service stations
- Base and edge grinding machines
- Base repair and binding adjustment equipment
- Waxing machines
- Rental software
- Rental, depot and drying systems



Who is on top,
sees much further.



WINTERSTEIGER.

A Global Player. Worldwide.

WINTERSTEIGER is the world market leader in its three divisions SPORTS, SEEDMECH and WOODTECH. Our success is based on customer proximity which we enjoy due to a globally-structured, tightly-knit sales and service network and sophisticated and future-oriented planning. In this we are guided by the following principles:

■ According to the „**Progress Principle**“ we are consistently extending our lead with targeted investments in research and development.

■ By the „**Quality and Productivity Principle**“ we mean both computer-assisted planning and design, which result directly in fully automated production processes, as well as strict quality assurance management, which ensures continuous control from design to after-sales service.

■ We meet the „**Qualification Principle**“ with optimally trained employees. Continuous professional development is an essential part of our strategy.

■ On one hand we see the „**Sustainability Principle**“ as our permanent contribution to long-term success, while on the other it represents a clear commitment to conserving natural resources.

The result:

- 15 subsidiaries
- 60 representatives worldwide
- Sales distribution in 130 countries
- 85 % export share
- World market leader in all three divisions

Division SPORTS

Total solutions for rental and servicing of skis and snowboards.



Division SEEDMECH

Worldwide No. 1 in field research equipment.



Division WOODTECH

Process solutions for quality thin-cutting.



Headquarters located in Ried im Innkreis, Upper Austria

Success begins with the right decisions. At the right time.
We look forward to you!



First Class
WINTERSTEIGER
Rental & Depot Solutions

Headquarters:

Austria: WINTERSTEIGER AG, 4910 Ried, Dimmelstrasse 9,
Tel.: +43 7752 919-0, Fax: +43 7752 919-52, sports@wintersteiger.at

International Companies:

Canada: WINTERSTEIGER Inc., CDN-Laval Q.C. H7L 5A1,
964 Bergar Street, Tel.: +1 450 6637800, Fax: +1 450 6632896,
info@canada.wintersteiger.com

Germany: WINTERSTEIGER AG, Subsidiary Germany,
94535 Eging am See, Kollmering 10, Tel.: +49 8544 974-375,
Fax: +49 8544 974-530, sports@wintersteiger.at

France: SKID-WINTERSTEIGER S.A.S., 73800 Ste. Hélène du Lac,
Parc d'Activités Alpespace, Tel.: +33 479 25-1160,
Fax: +33 479 25-1161, office@skid-wintersteiger.com

Italy: WINTERSTEIGER Italia s.r.l., 39030 La Villa in Badia (BZ),
Strada Ninz, 82, Tel.: +39 0471 844 186, Fax: +39 0471 844 179,
info@wintersteiger.it

Russia: OOO WINTERSTEIGER, Krzhizhanovsky str. 14, build. 3,
117218 Moscow, Russia, Tel. +7 495 645 84 91,
Fax: +7 495 645 84 92, office@wintersteiger.ru

Switzerland: WINTERSTEIGER Schweiz AG, 6331 Hünenberg,
Chamerstrasse 44, Tel.: +41 41 780 23 22, Fax: +41 41 780 23 90,
office@wintersteiger.ch

USA: WINTERSTEIGER Inc., 4705 Amelia Earhart Drive,
Salt Lake City, UT 84116-2876, Tel.: +1 801 355-6550,
Fax: +1 801 355-6541, mailbox@wintersteiger.com

Representations:

Argentina: Fidia SA, Buenos Aires, **Australia:** Rosbert International PTY.LTD., Artarmon, **Benelux:** Koltec Sport Equipment B.V., Dordrecht, **Bulgaria:** Infosport OOD, Sofia,
Chile: Eolia LTDA, Santiago, **China:** Melchers Techexport GmbH, Beijing, **Denmark:** Fun Sport, Vejle, **Finland:** Oy Hunteri AB, Turku, **Great Britain:** Anything Technical
Limited, Kendal/Cumbria, **Hungary:** Hefa Sport Ltd., Veszprém, **Japan:** SBA Incorporated, Tokyo, **New Zealand:** Tangled Web Marketing Limited, Rangiora, **Norway/Sweden:**
Board & Ski Teknisk A/S, Son, **Poland:** Ikatur, Mogilany, **Romania:** Maxalpin SRL, Brasov, **Slovakia/Czech Republic:** Snow-How CR s.r.o., Ricany-Jazlovice, **Slovenia:**
Tobos d.o.o., Škofja Loka, **Spain:** Manufacturas Deportivas Viper S.A., Barcelona, **South Korea:** Himazone, Seoul